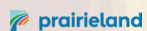




WORLD TRADE
CENTER™
SASKATOON



Trade & Convention Center

Creating connections in the community

FACILITY INFORMATION



We believe that special moments
bring significant value into our lives.



That's why we're in the business of *exceptional* client experiences.

Why choose us?

Located near the scenic South Saskatchewan River in beautiful Saskatoon, Saskatchewan, Prairieland is the city's largest trade and convention center.

Just minutes from downtown, with thousands of free parking spaces, it boasts over 240,000 square feet of exceptionally flexible event space.

It's a source of pride at Prairieland to create exceptional client experiences and provide unparalleled service of the highest standards. Every team member at Prairieland is dedicated to ensuring each event runs smoothly.

“

I just wanted to send a quick note to say how ‘over-the-top’ impressed we were with Prairieland. It was a real pleasure having our event there and the comments we received from our shoppers were amazing. Thank you all so much for a wonderful weekend!

”

SASKATOON EAST OUTGROW OUTPLAY

INVITING SPACES

CULINARY DELIGHTS

HIGH-TECH SYSTEMS

WE'VE GOT IT ALL



More about us

When planning an event, every detail is important. We're here every step of the way and we're invested in helping you create the best possible gala, reception, meeting, fundraiser, trade show, wedding banquet, concert or conference!

1

SALES & CLIENT SERVICES

Our Sales Team will work with you on availability, determining your needs and the best use of space for a successful event. Assigned on receipt of the finalized agreement, your dedicated Event Coordinator will ensure everything you need is attended to.

2

A/V PRODUCTION SERVICES

On-site services also include cutting edge, high-quality audio and visual equipment, along with the knowledgeable A/V Production Team to create almost anything imaginable! Special services such as digital podiums, screens, large scale wall projections and seamless media integration are also possible with our industry leading in-house team.

3

FOOD & BEVERAGE SERVICES

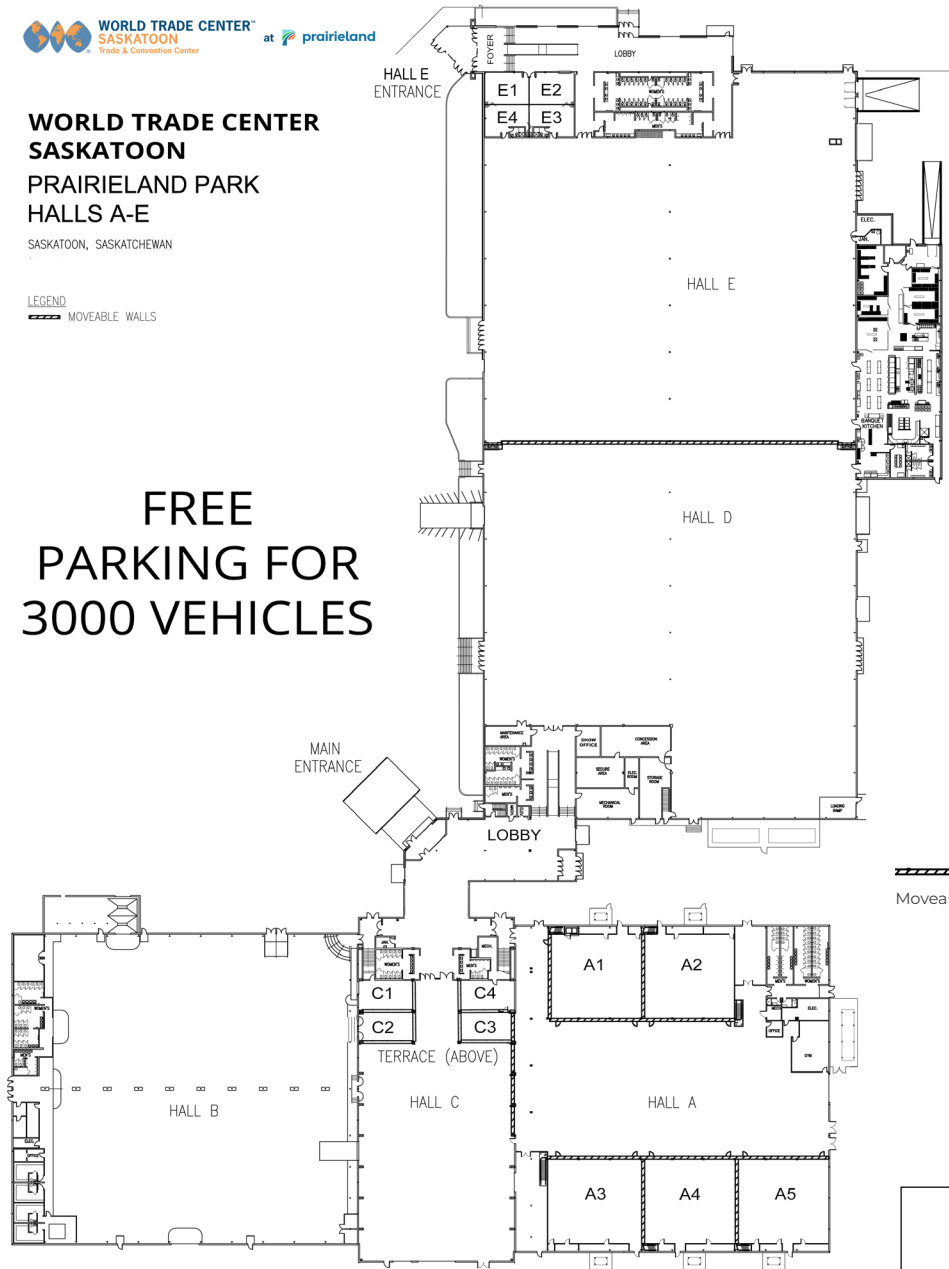
Known for its creativity, quality and service excellence, the Food and Beverage Department is capable of providing the best culinary experiences through a wide range of services offered, including menu customization and dietary considerations.

WORLD TRADE CENTER SASKATOON **PRAIRIELAND PARK** **HALLS A-E**

SASKATOON, SASKATCHEWAN

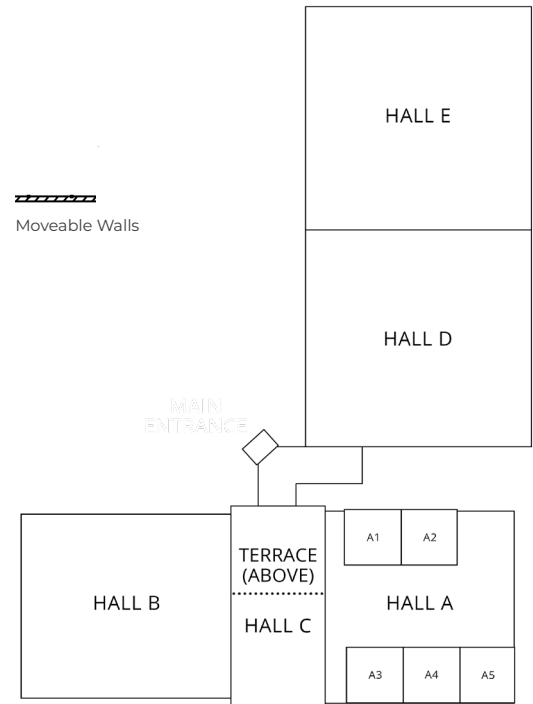
LEGEND
 MOVEABLE WALLS

FREE PARKING FOR 3000 VEHICLES



The Trade and Convention Center consists of six halls connected by a gorgeous common lobby. We utilize digital screens to direct guests throughout the venue.

The versatility of the facility creates an optimum environment for both large and small gatherings.



HALL A



Hall A with its soundproof, movable partitions, provides the option to create up to five meeting rooms. These rooms are capable of accommodating groups of up to 1,500 with a large center area for another session, plenary, trade show or networking area. Meeting rooms feature individual audio/visual capabilities and temperature controls. A 60-foot dividing wall opens into Hall C, allowing for a seamless transition for added programming, if needed.

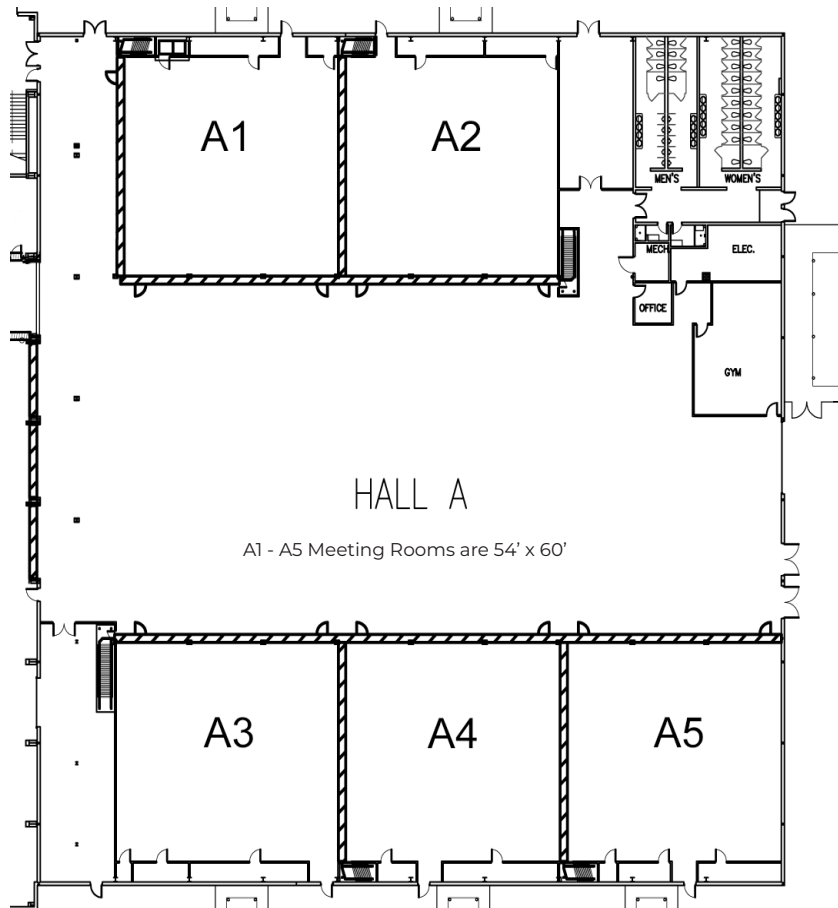


HALL A SPECIFICATIONS

Building Size	42,000 square feet
Usable Floor Area	38,000 square feet
Overhead Doors	One (18' x 16')
Ceiling Height	16' center
Trade Show Booths	180
Seating Capacity	2,500
Flooring	Carpet

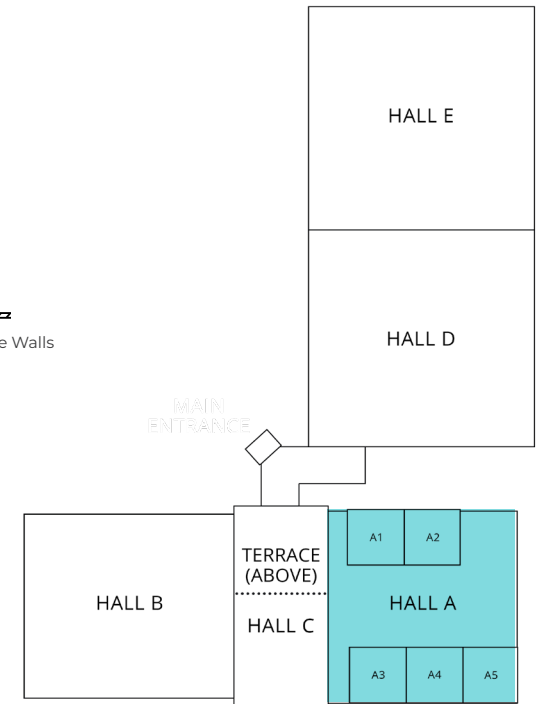
Hall A is available with or without Meeting Rooms. Size of meeting rooms with opening adjacent air walls can adapt to accommodate larger capacities.

HALL A



A1 - A5 Meeting Rooms are 54' x 60'

Moveable Walls



HALL B



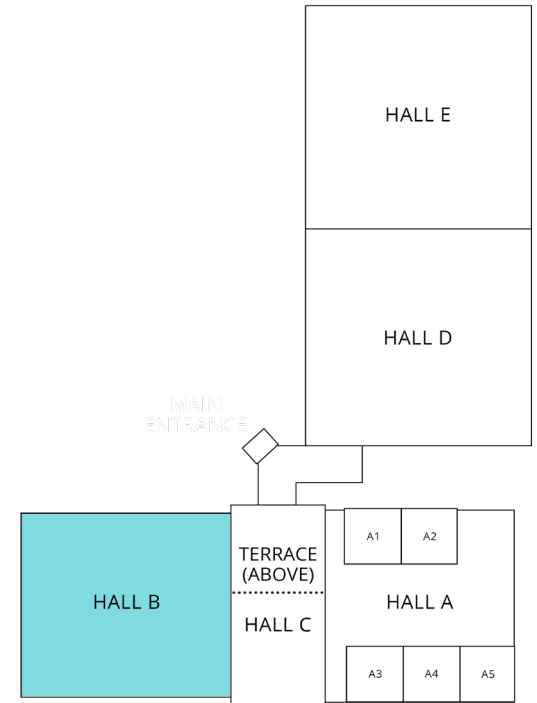
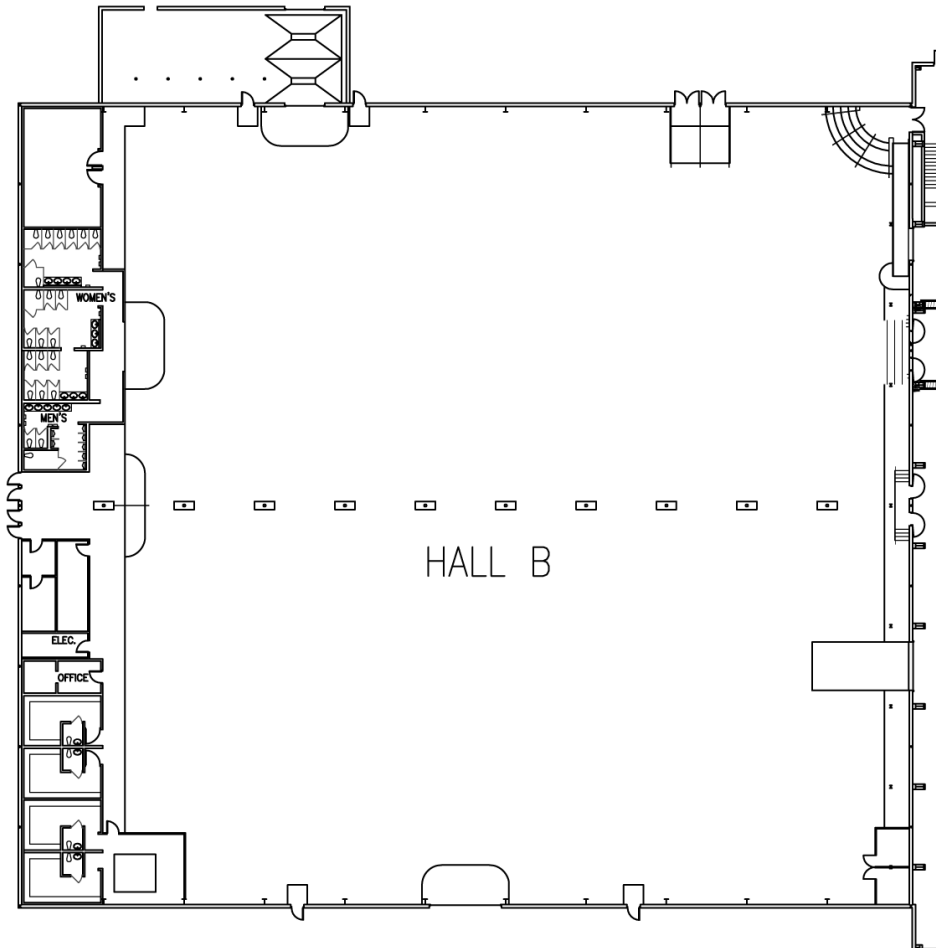
Hall B features central room dividing, floor-to-ceiling drape to accommodate various capacities and flexible layouts. This hall is capable of accommodating groups of 200 to 3,000, making it perfect for an elegant reception, presentation or trade show.



HALL B SPECIFICATIONS

Building Size	40,000 square feet
Usable Floor Area	34,000 square feet
Overhead Doors	One (14' x 17')
Ceiling Height	23' center
Trade Show Booths	180
Seating Capacity	2,000
Flooring	Carpet

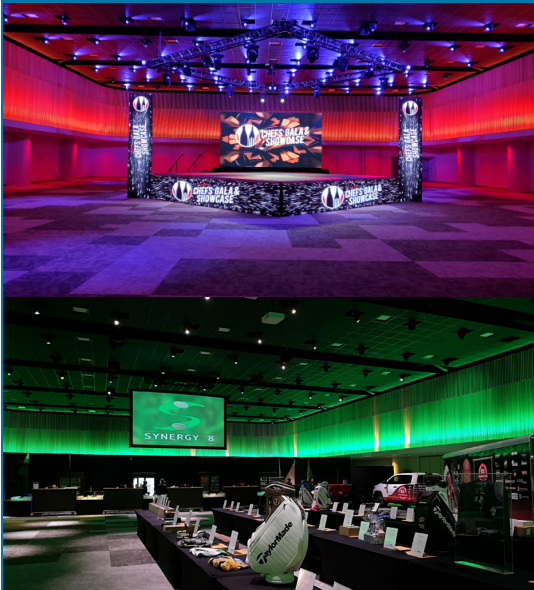
HALL B



HALL C



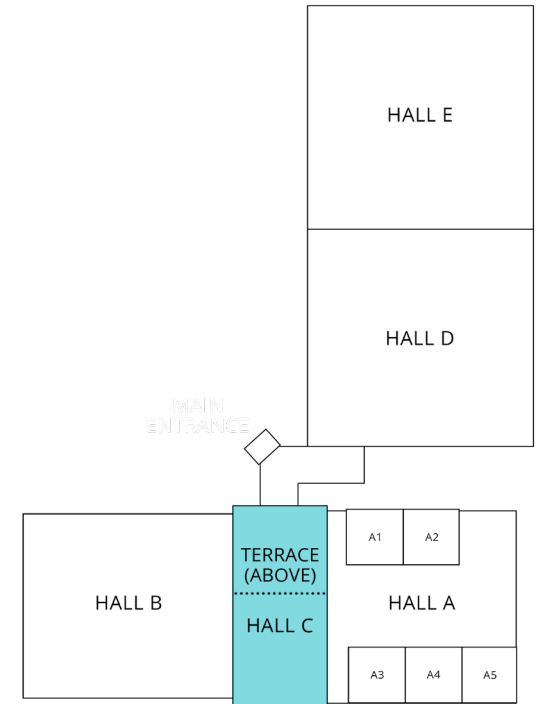
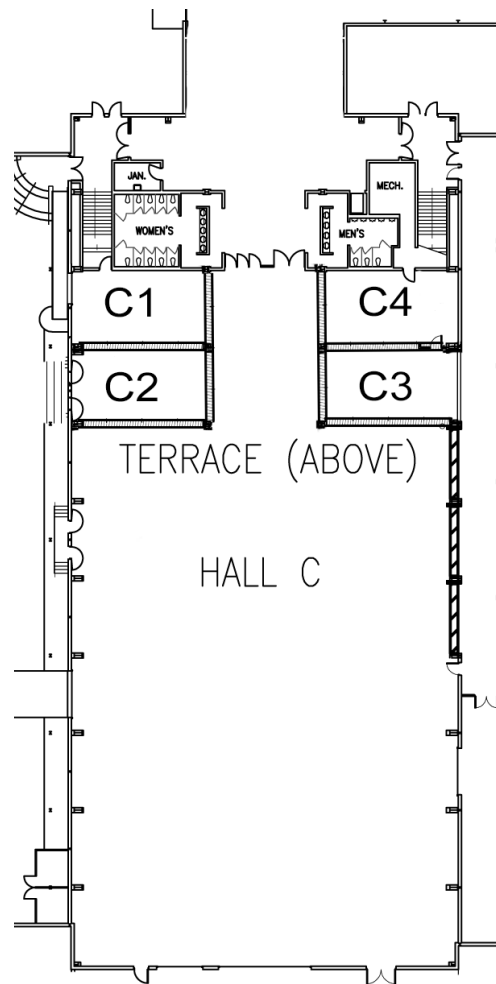
Hall C is Prairieland's most newly-renovated space and is indeed a showstopper. This versatile room features a 60-foot movable wall that opens directly to Hall A, allowing for more space if needed. Incredible, customizable LED lighting throughout the room makes it a great space for large presentations or award shows. Capability for four versatile meeting rooms or create a crush lobby for events in the main hall.



HALL C SPECIFICATIONS

Building Size	20,000 square feet
Usable Floor Area	17,800 square feet
Ceiling Height.....	23.33'
Trade Show Booths.....	97
Seating Capacity.....	1,200
Flooring.....	Carpet

HALL C



MEETING ROOM SPECIFICATIONS

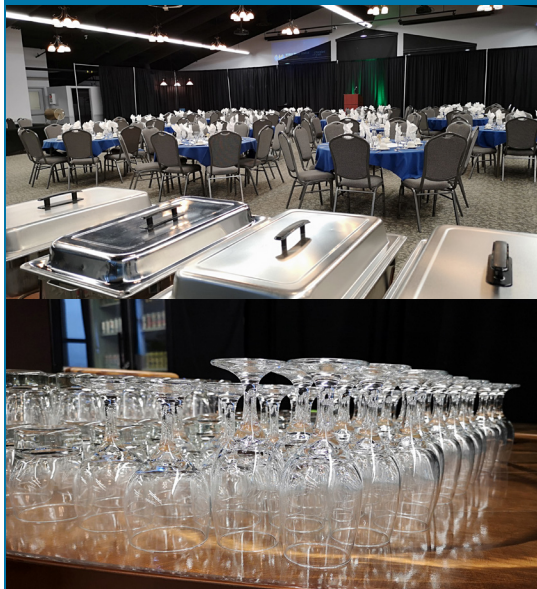
Full Meeting Room/Reception.....	40'x 90'
2 Meeting Room Set-Up	Two 40' x 30'
4 Meeting Room Set-Up (each)	Four 20' x 30'
Ceiling Height.....	9.33'
Flooring.....	Carpet



TERRACE



The Terrace is ideal for media conferences, banquets, weddings or small presentations. The stairwell access to both Hall A and Hall B makes it easy to use the Terrace as an additional facility to complement Halls A, B or C. The large window and natural lighting creates a spacious, welcoming atmosphere.

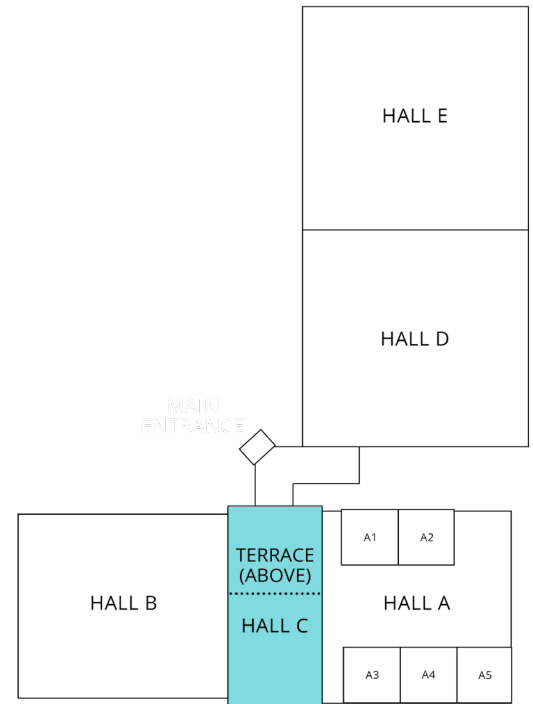
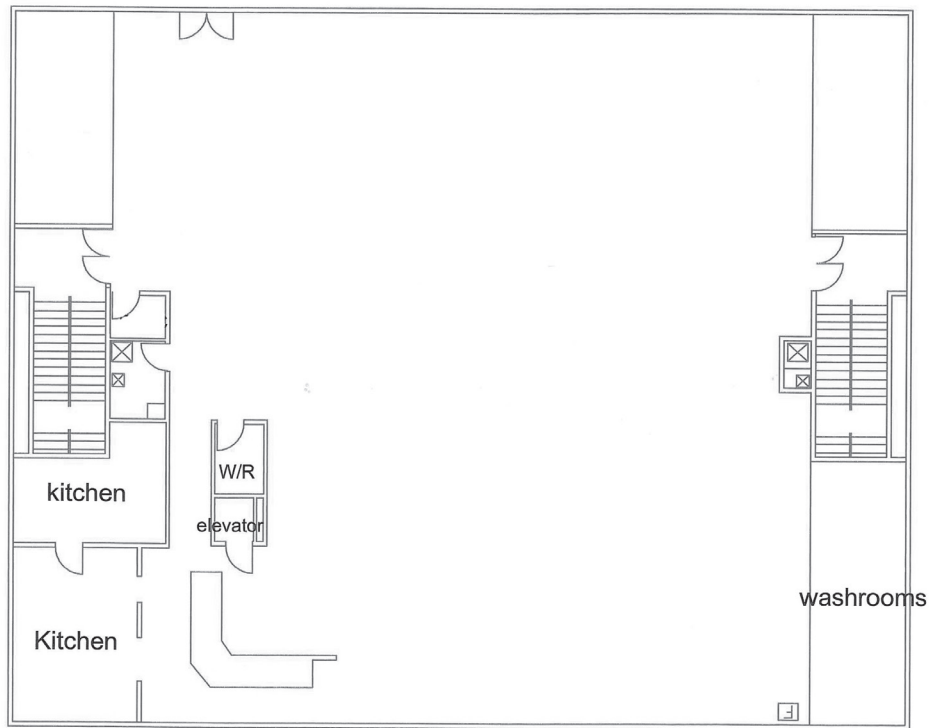


TERRACE SPECIFICATIONS

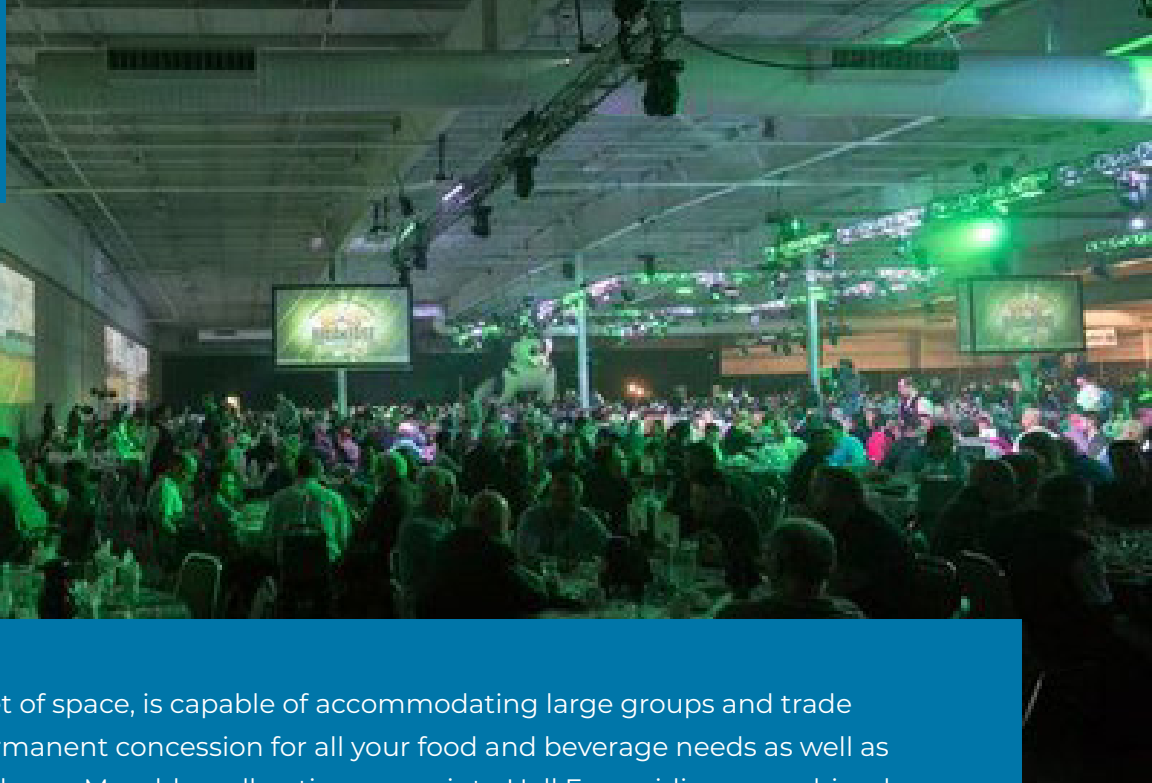
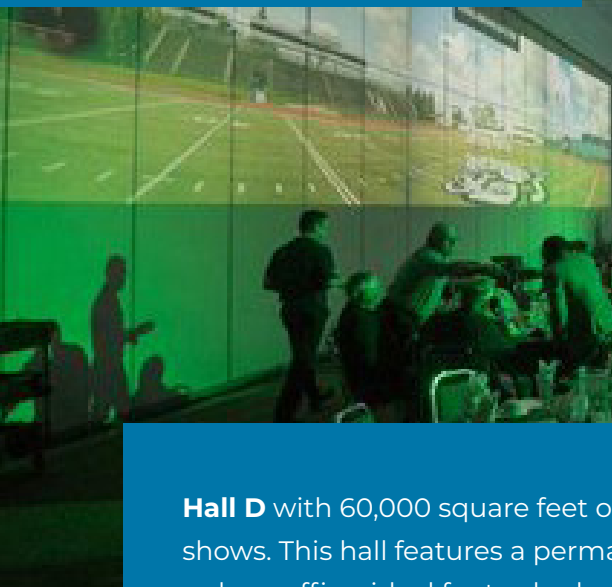
Floor Area	8,000
Ceiling Height	21' center sloping to 13'
Seating Capacity	380
Flooring	Carpet
Elevator	Access 2000

The Terrace is recommended for groups of 60-380.

TERRACE



HALL D



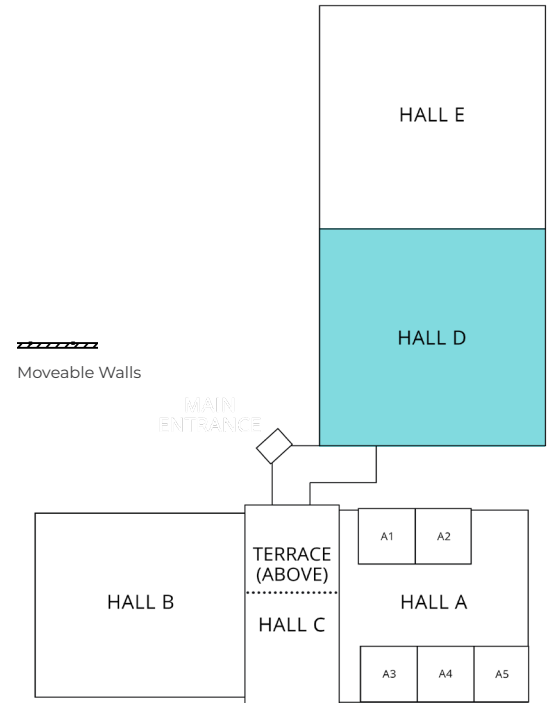
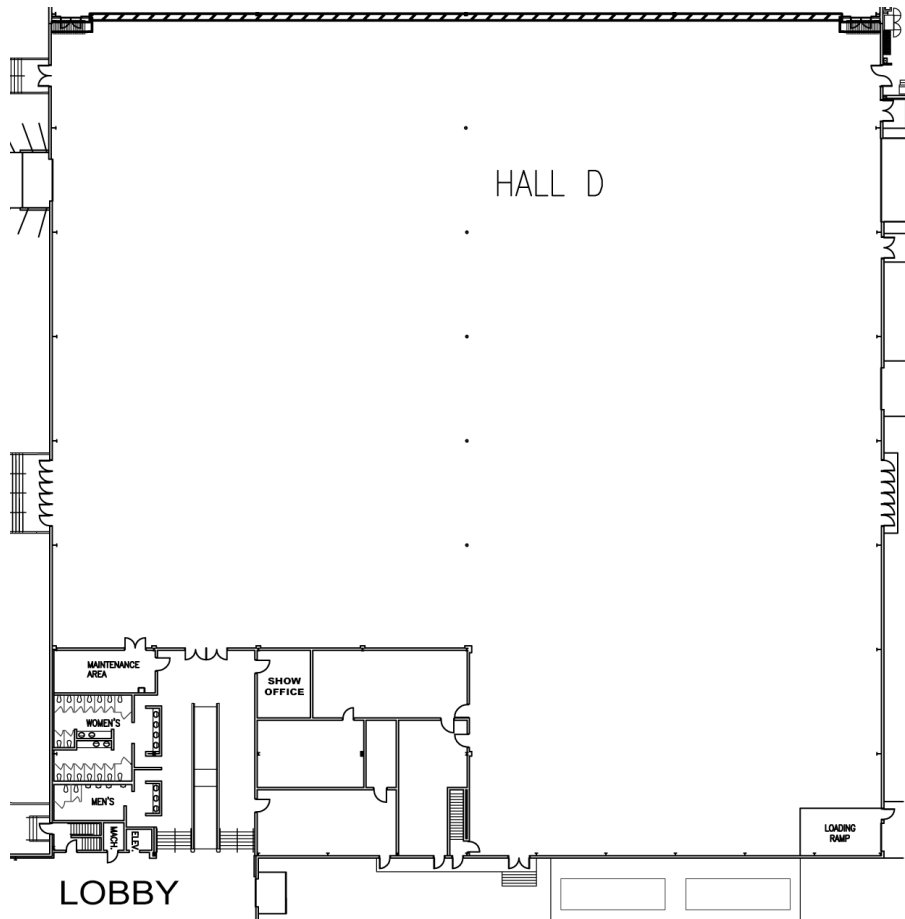
Hall D with 60,000 square feet of space, is capable of accommodating large groups and trade shows. This hall features a permanent concession for all your food and beverage needs as well as a show office, ideal for trade shows. Movable wall option opens into Hall E, providing a combined total of 120,000 square feet of space, if needed.



HALL D SPECIFICATIONS

Building Size	60,000 square feet
Usable Floor Area	50,400 square feet
Overhead Doors	One (24' x 20') Two (10' x 14') One (8' x 10') Dock-level loading door
Ceiling Height	28' center sloping to 24'
Trade Show Booths	250
Seating Capacity	3,200
Flooring	Concrete

HALL D



HALL E



Hall E offers an exclusive entrance and foyer plus up to four spacious Meeting Rooms. Similar to Hall D, this hall is capable of accommodating large groups and trade shows. The movable wall option opens into Hall D, providing a combined total of 120,000 square feet of space.



HALL D SPECIFICATIONS

Building Size 60,000 square feet

Usable Floor Area 50,400 square feet

Overhead Doors One (20 x 20')
One (8' x 18')
Two (8' x 10')

Dock-level loading doors

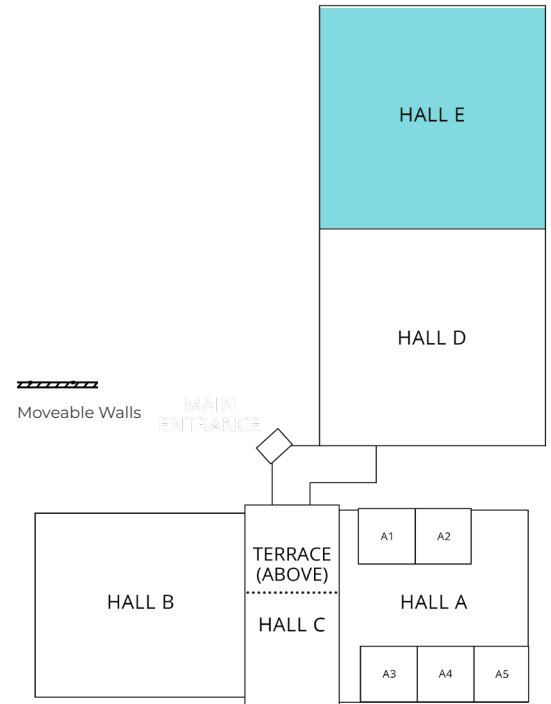
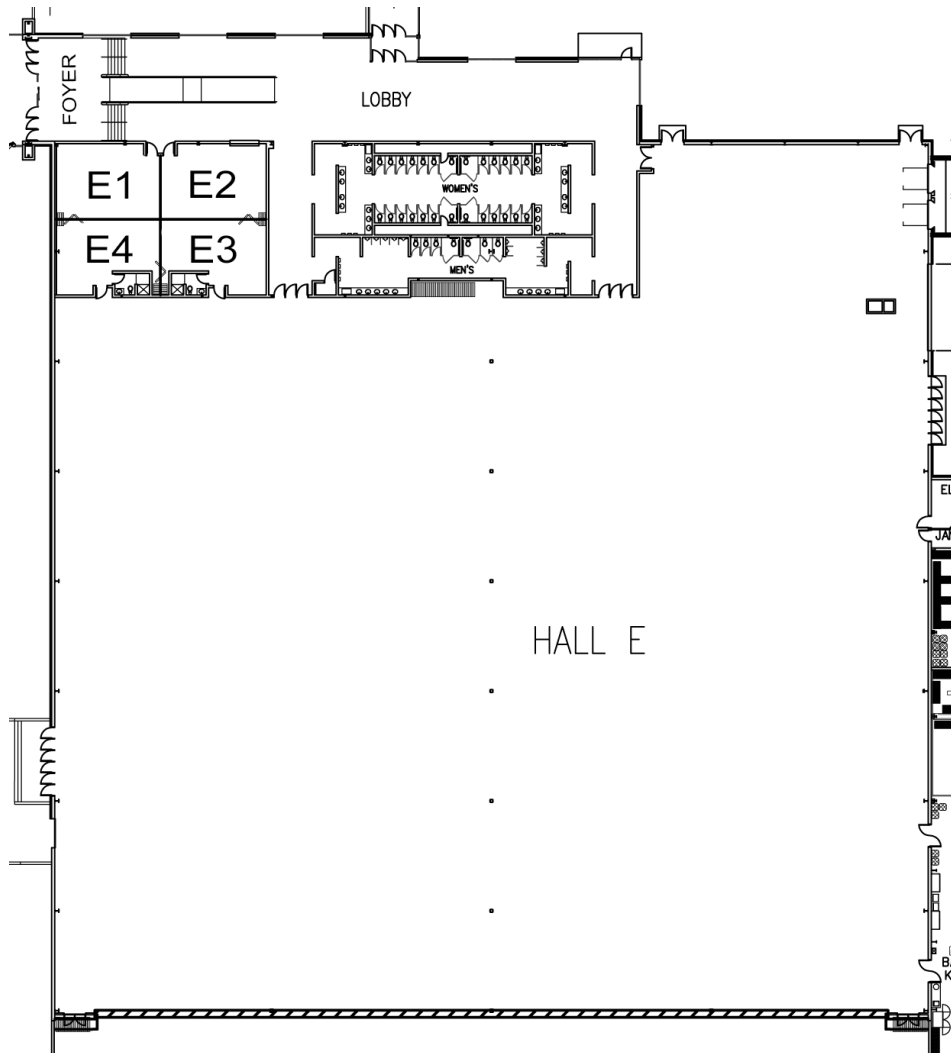
Ceiling Height 28' center sloping to 24'

Trade Show Booths 275

Seating Capacity 3,200

Flooring Concrete

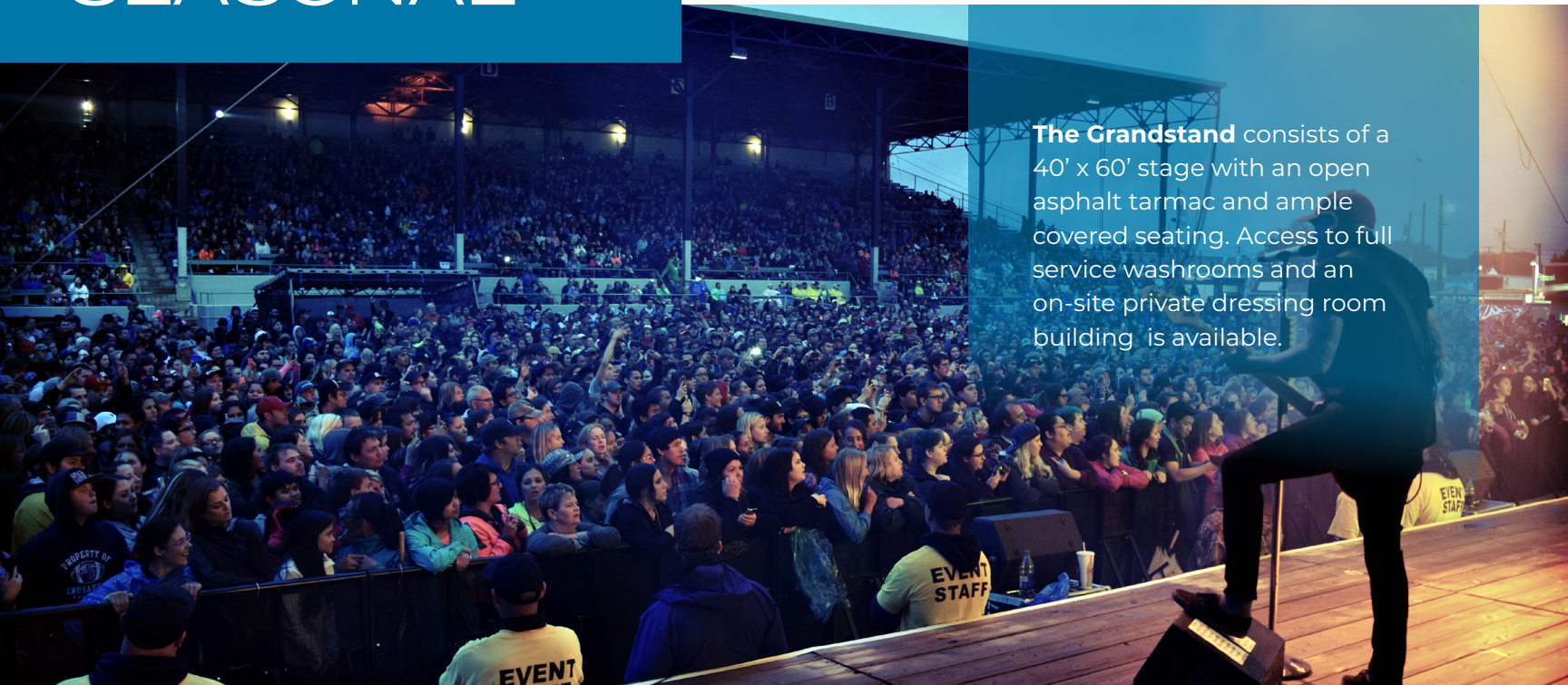
HALL E





The Kickin' Horse Saloon, our newest outdoor rental venue, offers a fully covered and open option. Rain or shine your event can go on. The Kickin' Horse Saloon is located east of Hall E and adjacent to the Grandstand. Optional stageline can be added.

SEASONAL



The Grandstand consists of a 40' x 60' stage with an open asphalt tarmac and ample covered seating. Access to full service washrooms and an on-site private dressing room building is available.

SPECIFICATIONS

CAPACITIES MAY DIFFER BASED ON
SET-UP AND REQUIREMENTS

	SPACE DIMENSIONS			SPACE SEATING CAPACITIES			
	Size (W x L)	Ceiling Height	Area (Sq. Ft)	Rounds (8)	Theater	Boardroom	Trade Show
Hall A	210' x 200'	16' center	42,000	1,500	2,800	-	-
Hall A Center			25,800	750	1,400	-	80
Meetings Rooms 1-5	54' x 60' each	12' sloping to 9'	3,240	150	300	-	-
Hall B	200' x 200'	23' center sloping to 12'	40,000	1,500	2,500	-	180
Hall B (Half)	100' x 200'		20,000	800	1,300	-	90
Hall C	100' x 200'	24' (11' under bulkhead)	20,000	576	1,000	-	85
Meeting Rooms 1-4	20' x 30' each	11'	600	48	60	1 Room 20 2 Rooms 30	-
Hall D	240' x 240'	28' center sloping to 24'	60,000	2,500	4,500	-	230
Hall E	240' x 240'	28' center sloping to 24'	60,000	2,500	4,500	-	230
Meeting Rooms 1-4	20' x 30' each	10'	600	32	60	12	-
Meeting Rooms 1-4 Combined	40' x 60'	10'	2,400	128	200	2 Rooms 30 Combined 50	-
Terrace	80' x 100'	21' center sloping to 13'	8,000	200	400	-	-
Kickin' Horse Saloon	300' x 400'	16' center sloping to 11'	120,000	Covered 200	-	-	-
Grandstand	-	-	-	-	9,000	-	-



Box 6010, 503 Ruth Street West
Saskatoon, SK S7K 4E4

Tel: (306) 931-7149 Fax: (306) 931-7886
Toll Free: 1-888-931-9333

Email: contactus@prairielandpark.com

WWW.PRAIRIELANDPARK.COM

CORPORATE SPONSORS

